



The Timpson Training Unit Meter Pan Test Simulator comes equipped with Timpson Arc-Flash Suppression, the revolutionary technology that provides a training environment safe from dangerous arc-flash.

Available Voltages

Voltage	Phase
120/240	1
120/208	3
277/480	3
120/240/208 Delta	3

Timpson Electrical & Aerial Services, LLC
www.timpsontraining.com
info@timpsontraining.com
 (410)656-0650
 P.O. Box 948
 Rising Sun, MD 21911

Energized Meter Panel Training is *now* a reality.
 METER PAN TEST SIMULATOR
 TTU-M with Timpson AST





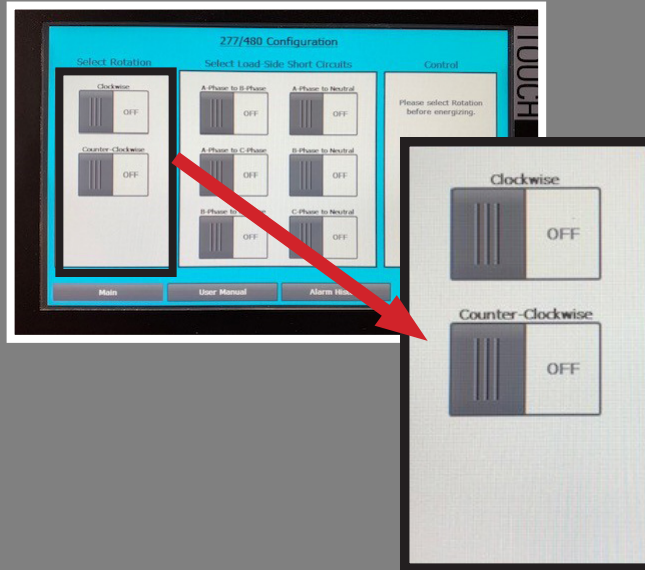
METER PAN TEST SIMULATOR

In order to survive in the field and/or reduce risks linemen must be able to think critically & clearly, and solve problems quickly under extreme stress. This can be difficult, so training instructors should do live energized training drills, to give students the opportunity to develop these skills. The overall goal of this behavioral training is to heighten awareness and instill good habits in students through repeated exposure to real-world situations they will find themselves in.

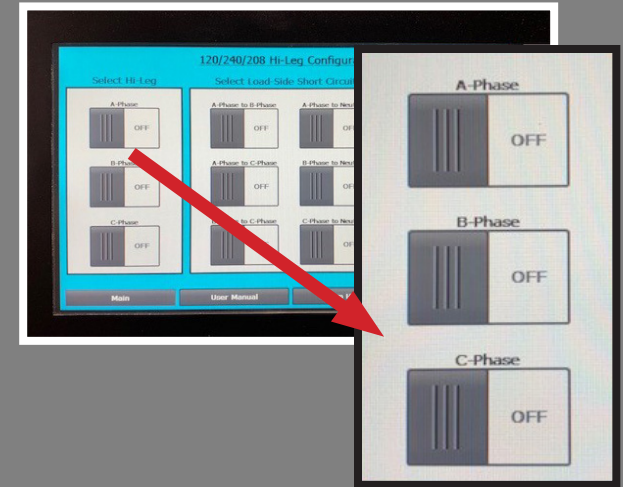
As with all the jobs linemen are tasked with, they are all dangerous, pulling and plugging in meters is no exception, linemen are exposed to high fault currents and arc-flash when performing these tasks.

This training simulator was designed to help aid trainees in situations they may experience in the field, from voltage and rotation issues, to load side faults. This panel uses Timpsons AST to eliminate the risk of arc-flash while maintaining correct voltages.

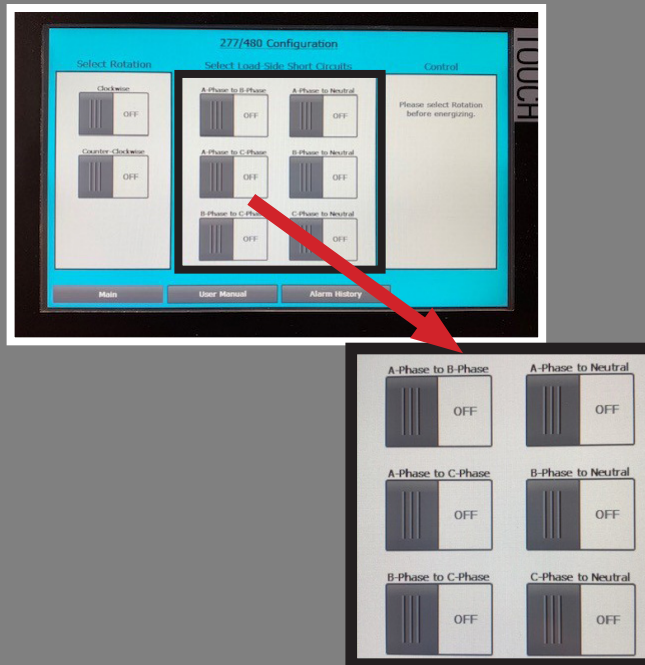
Selecting Rotation



Moving Position of Hi-Leg in Delta System



Selecting Load-Side Faults



Selecting Voltages

